

Business Board of Citizenship - CPCE IN NUTSHELL 11 YEARS

Conselho
Paranaense de
Cidadania Empresarial

Schedule

SUSTAINABLE LEADERSHIP

08:30 - Welcome of Parana's Board of Corporate Citizenship - CPCE and CIFAL

08:40 - Sustainable Leadership - Dan Paracha, Professor of Education, Division of Global Affairs - Kennesaw State University

Good Practices at Universities of CPCE's counselors

09:40 - Sustainable Leadership at Federal University of Paraná UFPR - Farley Simon Mendes Nobre

09:50 - Organizational analysis tool and reflection on sustainability Management
Josué Alexandre Sander – UNIBRASIL

10:00 - Perspectivaction : A new model of Responsible Management Education
- Brazilian Business School - ISAE - Norman de Paula Arruda Filho

10:10 - Coffee break

Schedule

10:30 Round Tables Presentation - Universities of Paraná and Kennesaw University

Table 1 - University Towards Sustainability in UTPFR - Sonia Ana Charchut Leszczynski

Table 2 - Sustainable Leadership at Pontifical Catholic University of Paraná, PUC/PR - Alex A. Ferraresi

Table 3 - Corporate Sustainability and Strategy - FAE

Table 4 - Sustainable Leadership at UNINTER - Rodrigo Berté

Table 5 - Sustainable Leadership at UTP - Tuiuti University of Paraná, Ana Margarida de L Taborda

10: 50 Debate

11:20 Closed ceremony





CPCE **200** events held that reached approximately **90 mil**



peoples

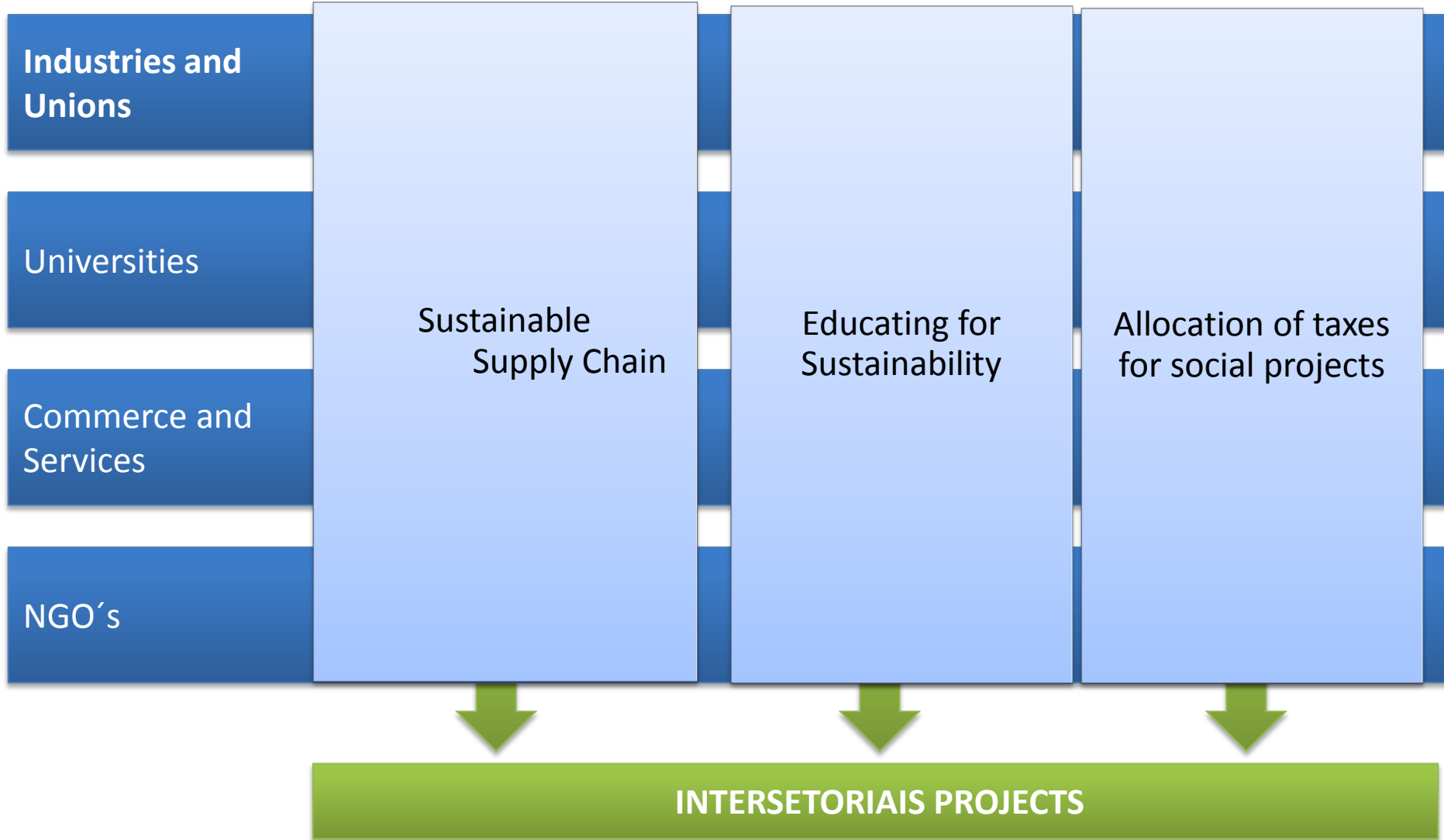
directly and indirectly by the actions in



30 municipalities



Strategic Projects



Our Mission

Articulate the skills of Corporate Social Responsibility - CSR - in companies and different sectors of society to promote sustainable development of Paraná.

Education and sustainability

CONTEST

108 Goods
Practices

ARTICLES

15 Articles on
sustainability

SPEECH

10 Speech at
Universities



Others Projects :

Sustanaible Suplly Chain

Global Compact

Prme - Principles for Responsible Management Education

Development Sustainable Goals - SDG

Allocation of taxes for social projects

Person with disabilities at labour market

Sustainable Supply Chain

WORKSHOPS

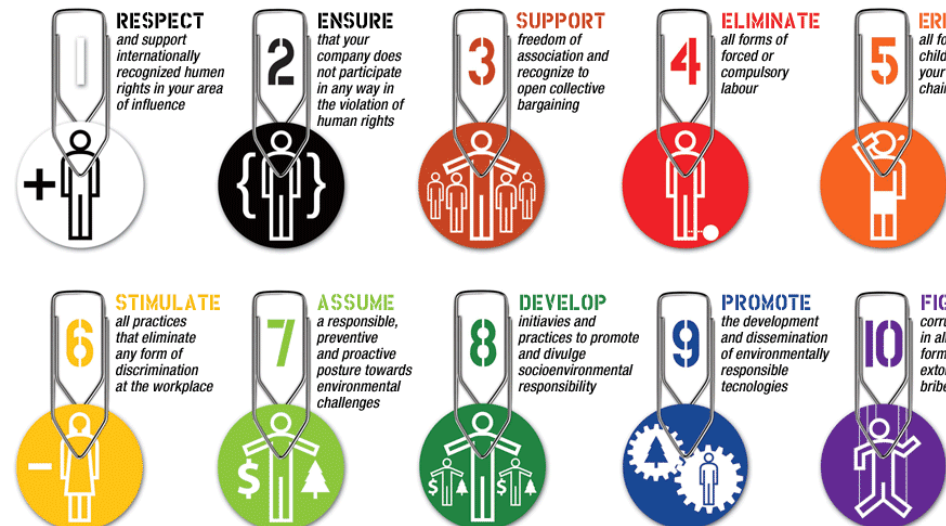
Workshops for **Sustainability to Competitiveness**

CASES

Cases of the application of **Global Compact** principles and Good Practices on Sustainability - 82 companies



GLOBAL COMPACT PRINCIPLES



SUSTAINABLE DEVELOPMENT GOALS

